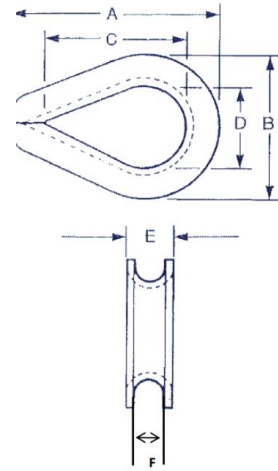




TW PRODUCTS

Chain, Wire Rope & Rigging Hardware

Standard/Light Duty Steel Thimble



| Size (IN) (nominal wire rope diameter) | Apx. Weight in Pounds | Dimensions in Inches | | | | | | Pack Qty | Bulk Qty |
|---|-----------------------------|----------------------|------|------|------|------|------|-------------|----------|
| | | A | B | C | D | E | F | | |
| 3/32-1/8 | 0.035 | 1.94 | 1.06 | 1.31 | 0.69 | 0.25 | 0.16 | 25 | 500 |
| 3/16 | 0.035 | 1.94 | 1.06 | 1.31 | 0.69 | 0.31 | 0.22 | 25 | 500 |
| 1/4 | 0.035 | 1.94 | 1.06 | 1.31 | 0.69 | 0.38 | 0.28 | 25 | 400 |
| 5/16 | 0.040 | 2.13 | 1.25 | 1.50 | 0.81 | 0.44 | 0.34 | 25 | 400 |
| 3/8 | 0.067 | 2.38 | 1.47 | 1.63 | 0.94 | 0.53 | 0.41 | 25 | 300 |
| 1/2 | 0.125 | 2.75 | 1.75 | 1.88 | 1.13 | 0.69 | 0.53 | 10 | 200 |

- Meets the performance requirement of Federal Specification FF-T-276B, Type II