



GLOBAL SHIPPING CRISIS

May 12th, 2021

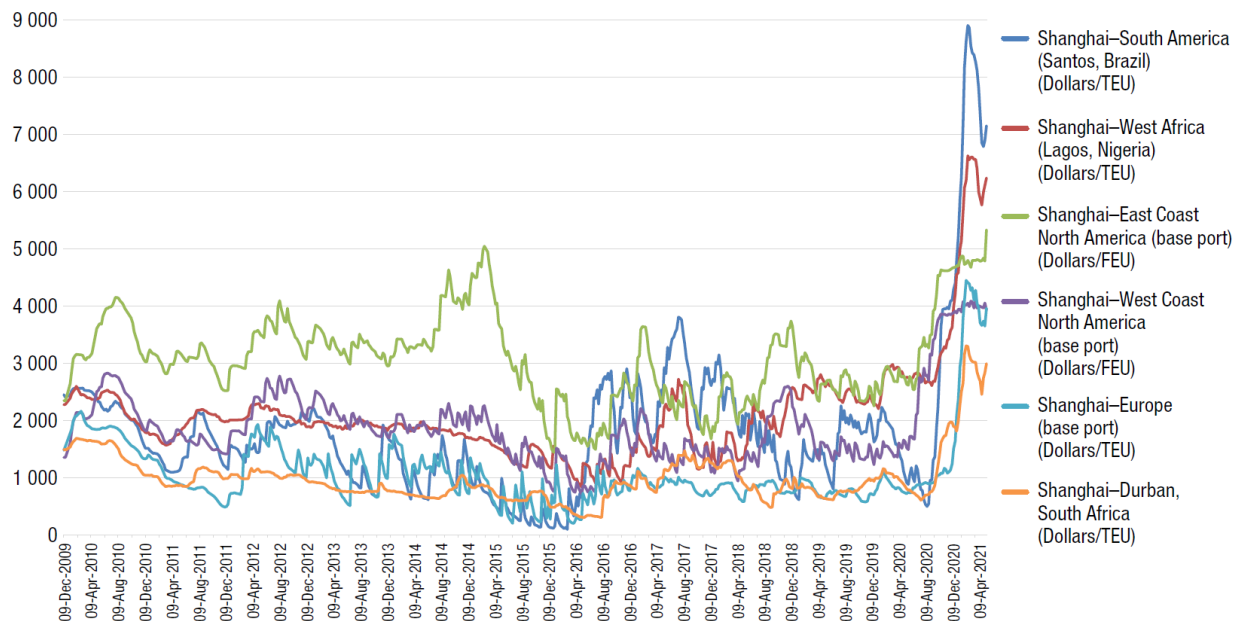
We are here to help ease your shipping challenges!



As many of you know, international shipping is one of the supply chains being disrupted by the pandemic. Since January 2021, companies operating globally have been struggling to obtain containers to ship or receive their products. Several factors that contributed to the disruption include limited container availability, port congestion, and the rapid economic recovery around the world, particularly in the United States, Europe, and China.

For these reasons, freight rates have skyrocketed, especially when shipping to developing regions. For example, since early January 2021, freight rates from China to South America have jumped 443% compared to 63% for the route between Asia and North America's eastern coast.

Shanghai containerized freight index, weekly spot rates, 18 December 2009–9 April 2021



Source: UNCTAD calculations, based on data from Clarksons Research, Shipping Intelligence Network Time Series.

During this challenging time, TW would like to share some good news with you. We have secured **100** containers per month: 60 x 20GP and 40 x 40GP containers per month from several steamship line companies. After meeting our own demand, we are happy to announce that we will be able to share about 20 containers per month for the next three months. We would like to offer these available containers to our existing customers first on a first come first serve basis. If you are interested in getting a quote from us, email your dedicated customer service representative.

As always, our leadership team is always available to listen and help. Feel free to email us at info@twprod.com.